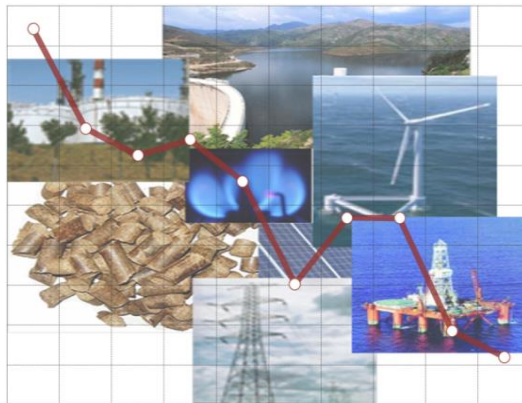


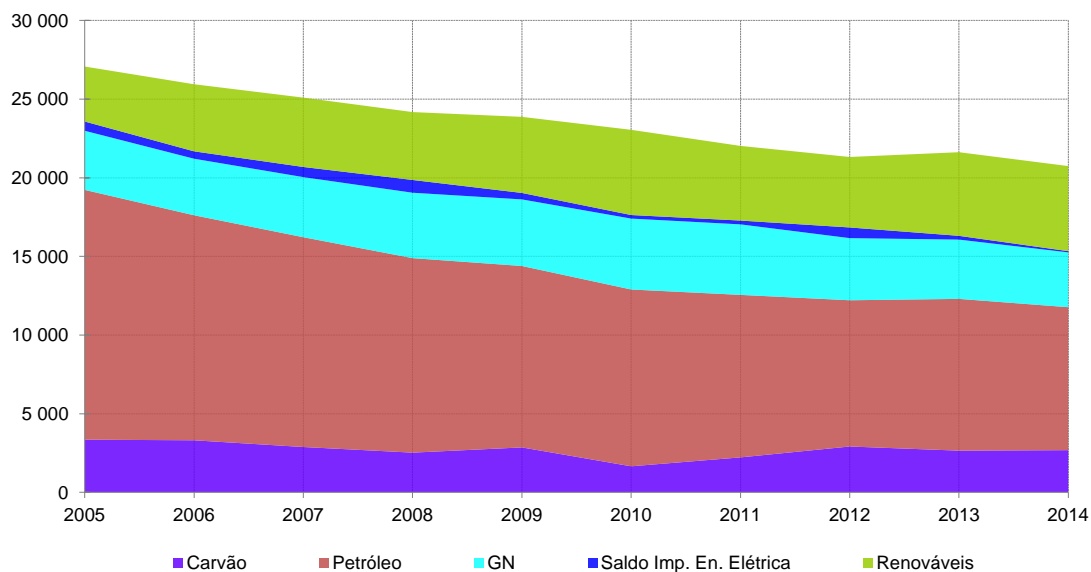
ENERGIA EM PORTUGAL

Principais Números



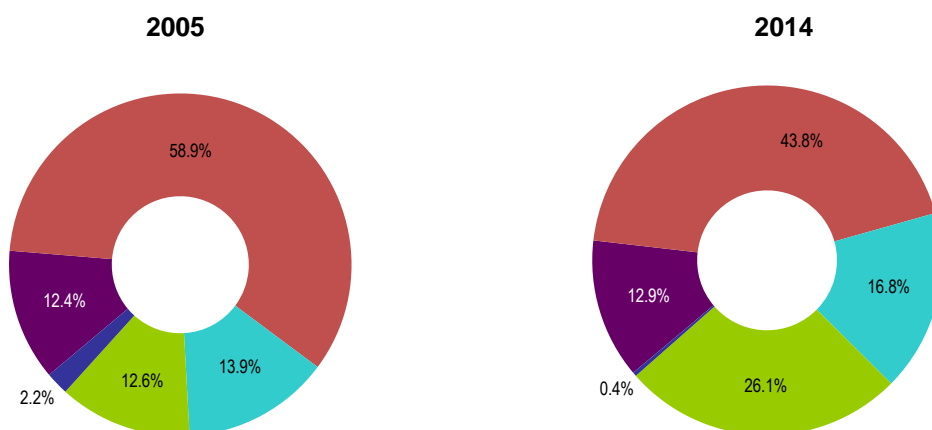
Fevereiro de 2016

CONSUMO DE ENERGIA PRIMÁRIA (ktep)

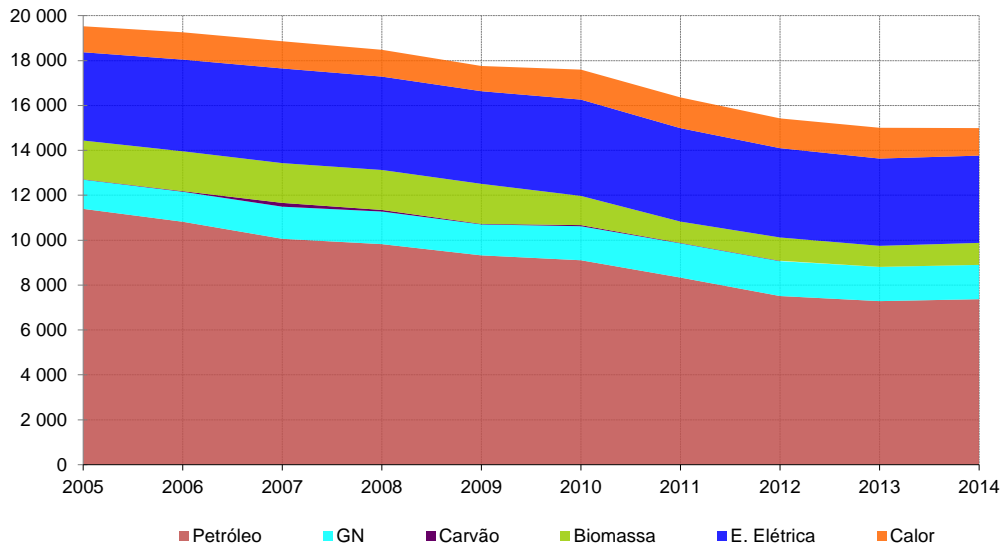


	2005	2006	2007	2008	2009	2010	2011	2012	2013	2014
Carvão	3 349	3 310	2 883	2 526	2 858	1 657	2 222	2 915	2 653	2 682
Petróleo	15 877	14 305	13 337	12 365	11 533	11 241	10 332	9 297	9 458	9 089
GN	3 761	3 595	3 821	4 157	4 233	4 507	4 483	3 950	3 769	3 486
Saldo Imp. En. Elétrica	587	468	644	811	411	226	242	679	239	78
Renováveis	3 392	4 166	4 316	4 225	4 737	5 321	4 647	4 395	5 220	5 408
O	121	127	119	131	139	150	183	246	177	178
Total	27 087	25 971	25 120	24 215	23 911	23 101	22 110	21 482	21 515	20 920

O - Outros resíduos não renováveis

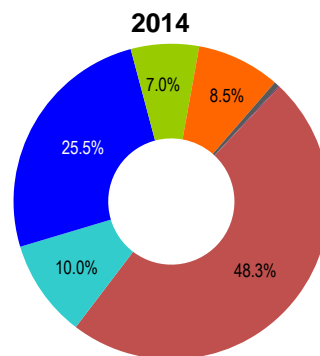
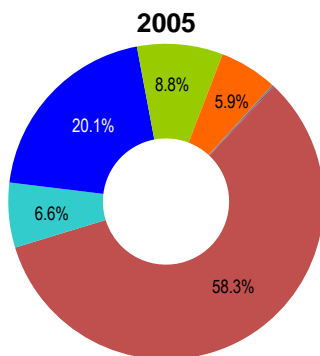


CONSUMO DE ENERGIA FINAL (ktep)

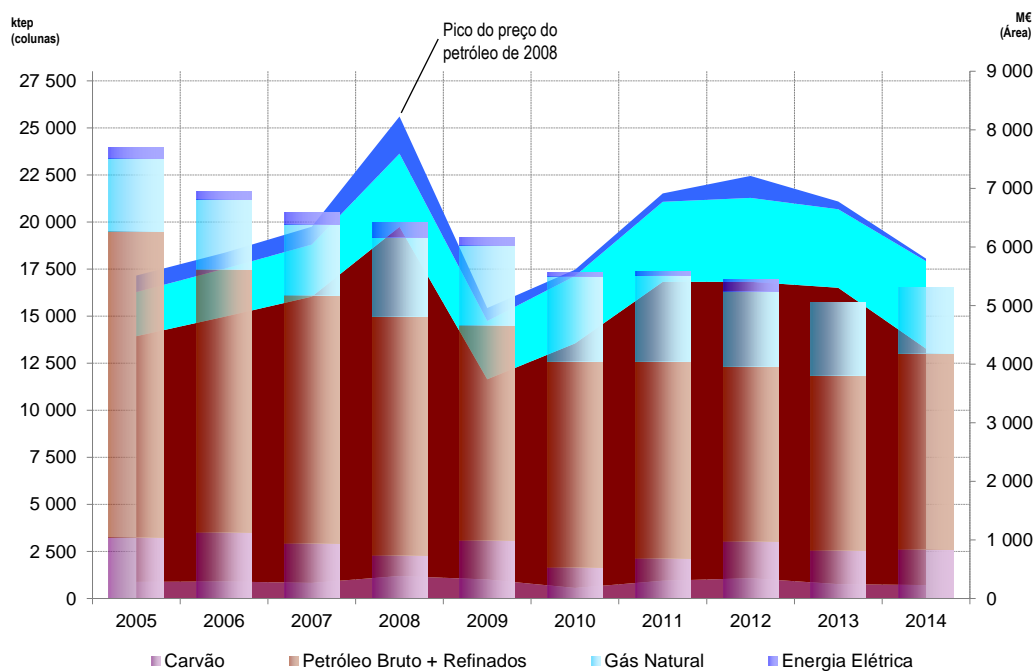


	2005	2006	2007	2008	2009	2010	2011	2012	2013	2014
Petróleo	11395	10821	9841	9582	9324	9106	8334	7513	7286	7372
GN	1300	1337	1431	1451	1378	1514	1525	1551	1524	1527
Carvão	16	26	168	71	22	50	20	19	19	12
Biomassa	1722	1744	1770	1781	1785	1301	947	1037	937	980
E. Elétrica	3932	4083	4216	4159	4126	4289	4162	3977	3889	3886
Calor	1160	1219	1221	1202	1123	1336	1370	1326	1370	1226
O	54	63	60	65	74	102	135	216	143	163
Total	19 579	19 292	18 708	18 311	17 832	17 699	16 494	15 640	15 167	15 167

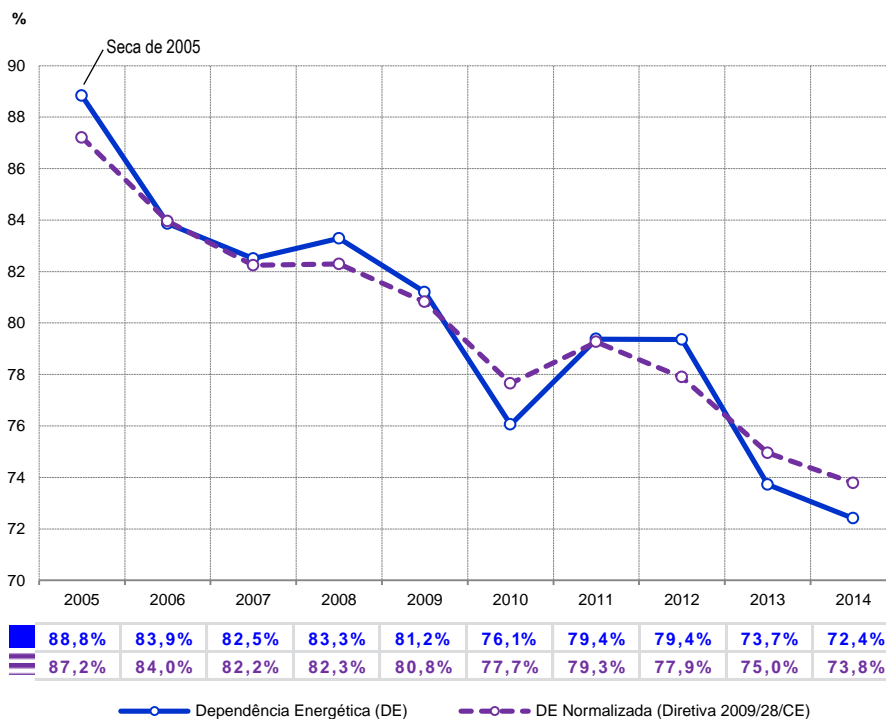
O – Outras formas de energia



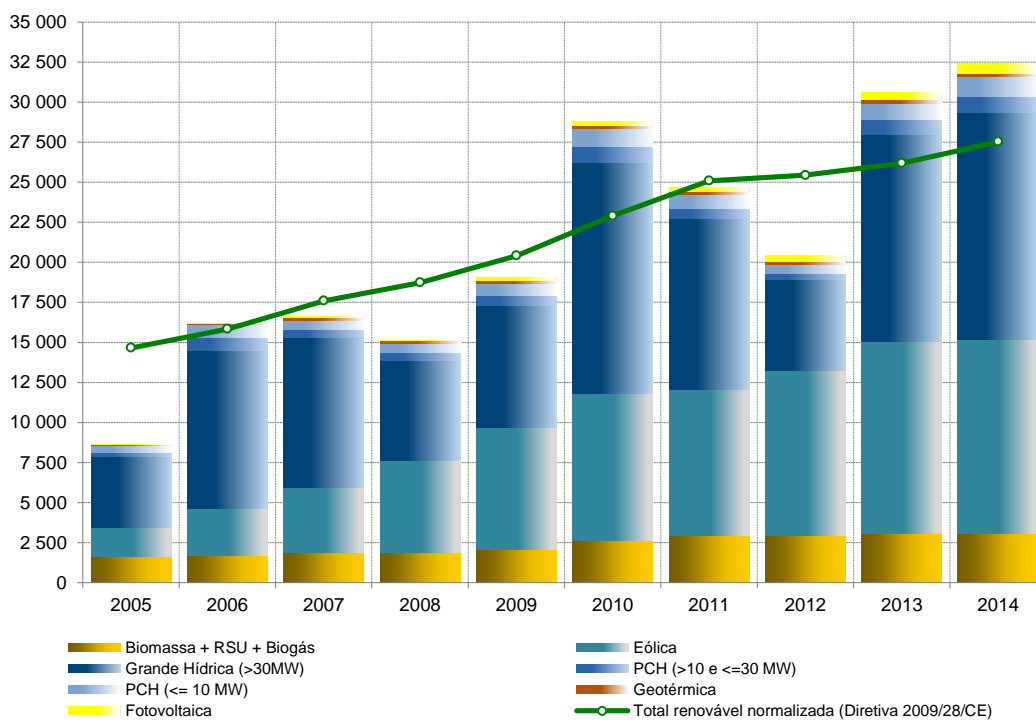
SALDO IMPORTADOR DE PRODUTOS ENERGÉTICOS



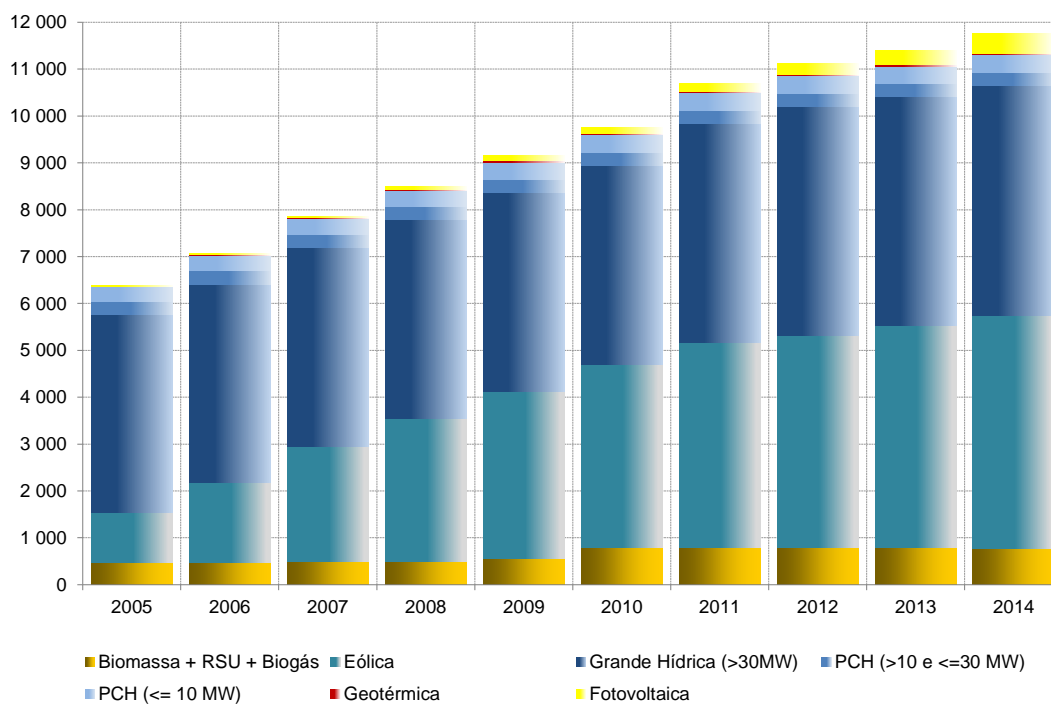
DEPENDÊNCIA ENERGÉTICA (%)



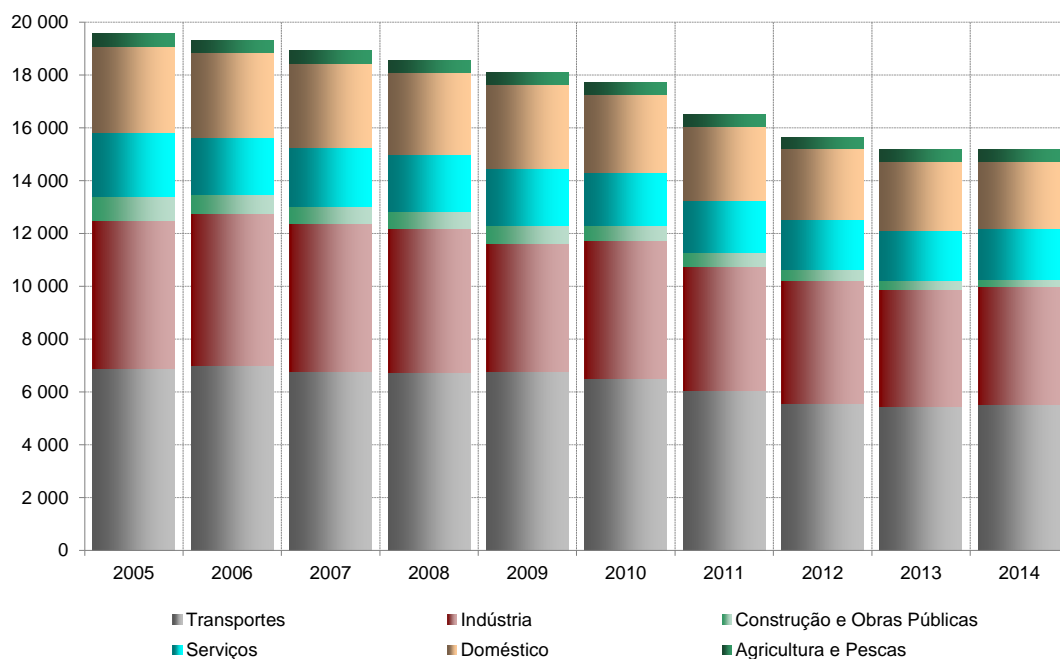
PRODUÇÃO DE ELETRICIDADE POR ENERGIAS RENOVÁVEIS (GWh)



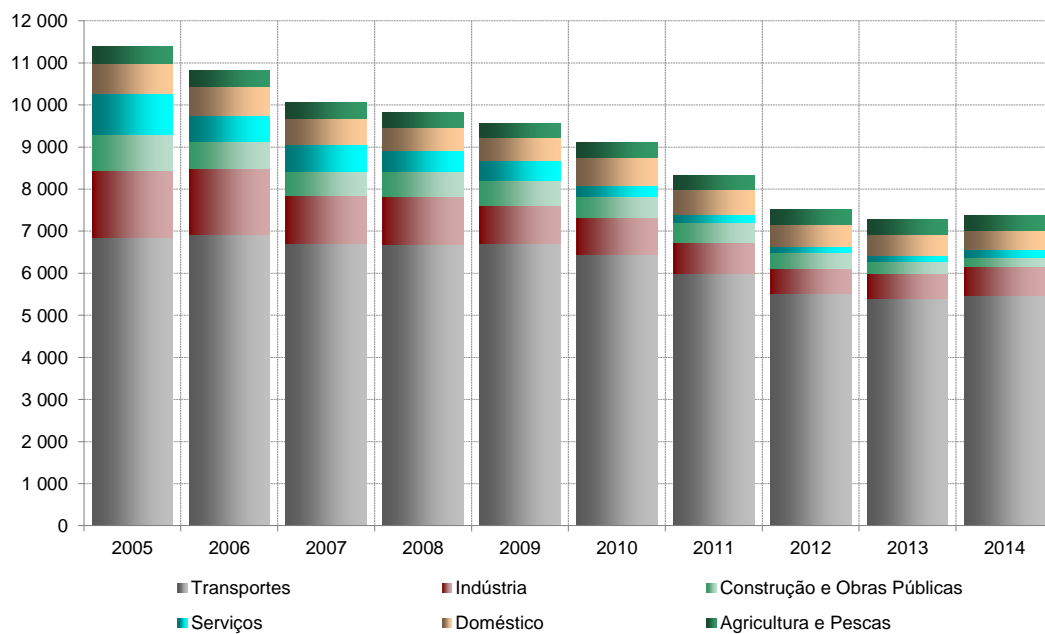
CAPACIDADE INSTALADA DE ENERGIAS RENOVÁVEIS (MW)



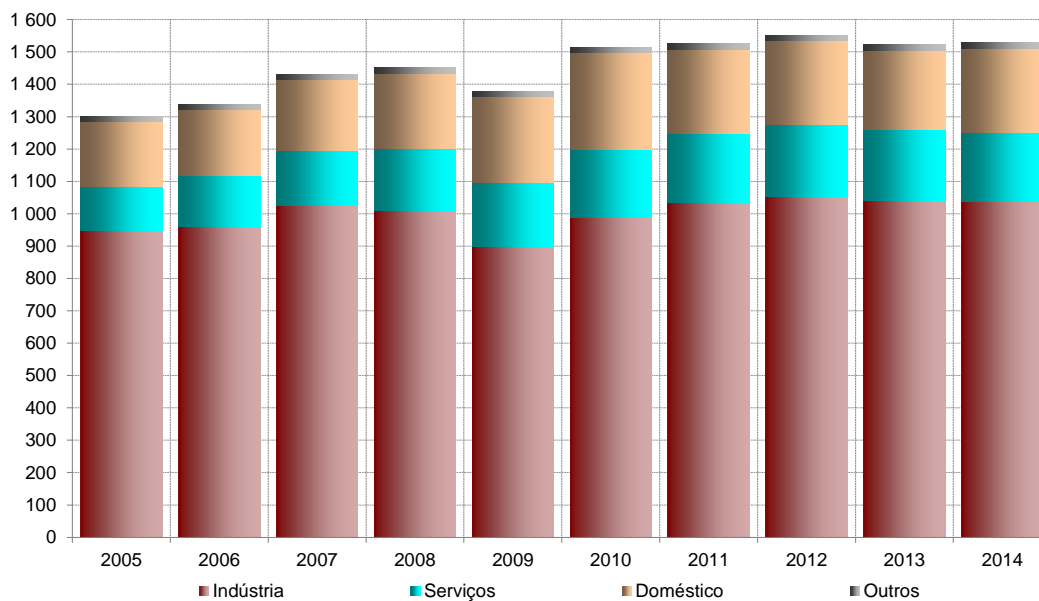
CONSUMO TOTAL DE ENERGIA FINAL POR SECTOR DE ATIVIDADE (ktep)



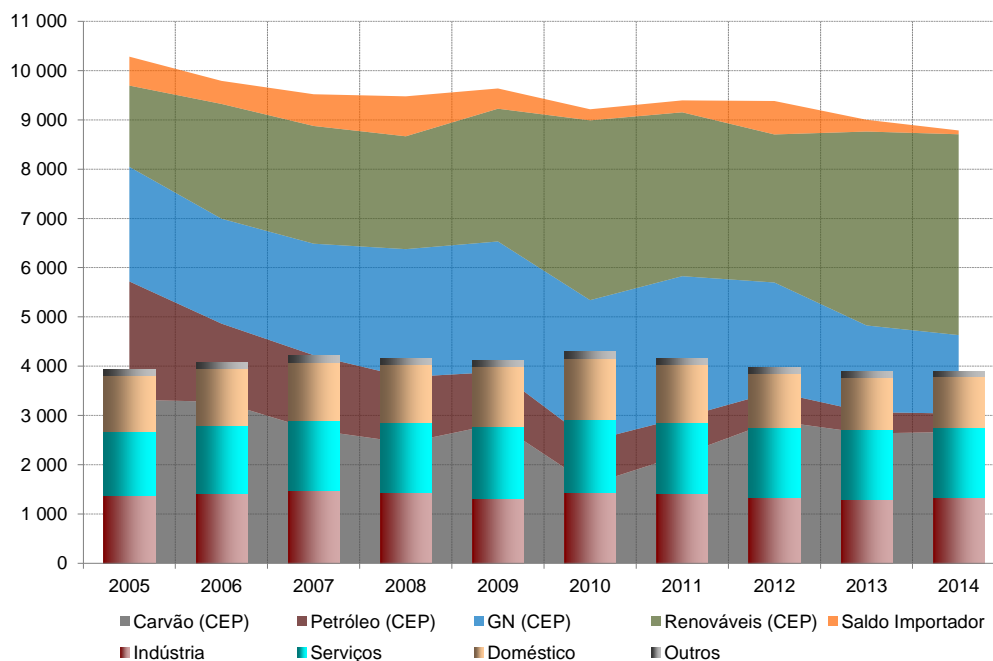
CONSUMO FINAL DE DERIVADOS DO PETRÓLEO P/ SECTOR DE ATIVIDADE (ktep)



CONSUMO FINAL DE GÁS NATURAL POR SECTOR DE ATIVIDADE (ktep)



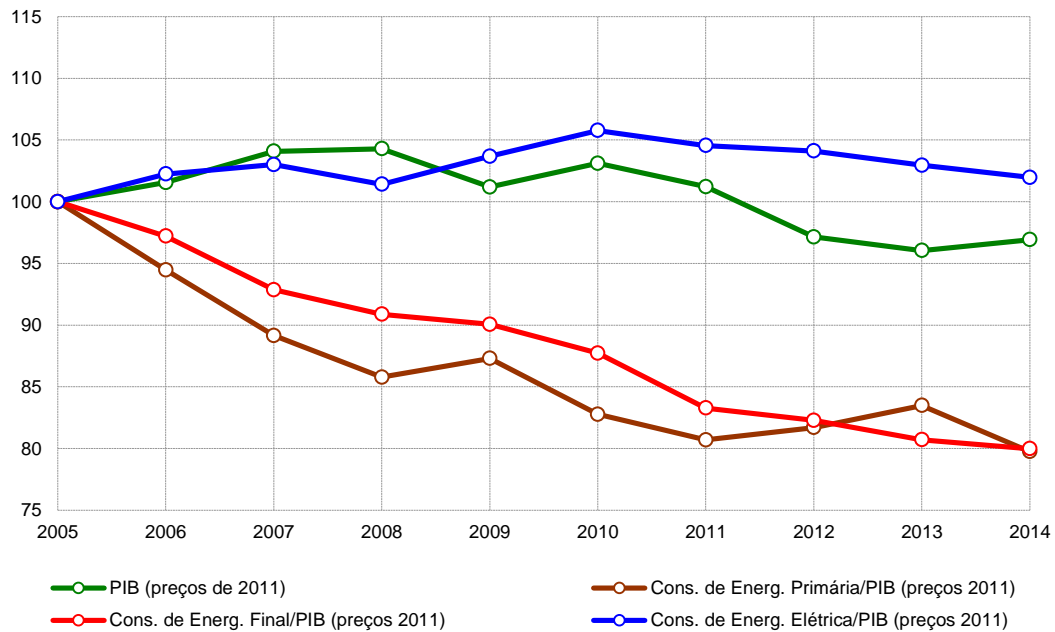
ENERGIA ELÉTRICA (ktep)



O consumo de energia primária (CEP) na produção de energia elétrica está representado em área. (inclui o consumo na produção de calor em cogeração).

O consumo de energia elétrica por sector de atividade está representado em colunas.

CONSUMO ENERGÉTICO / PIB (2005=100)



CONSUMO ENERGÉTICO POR HABITANTE (2005=100)

