

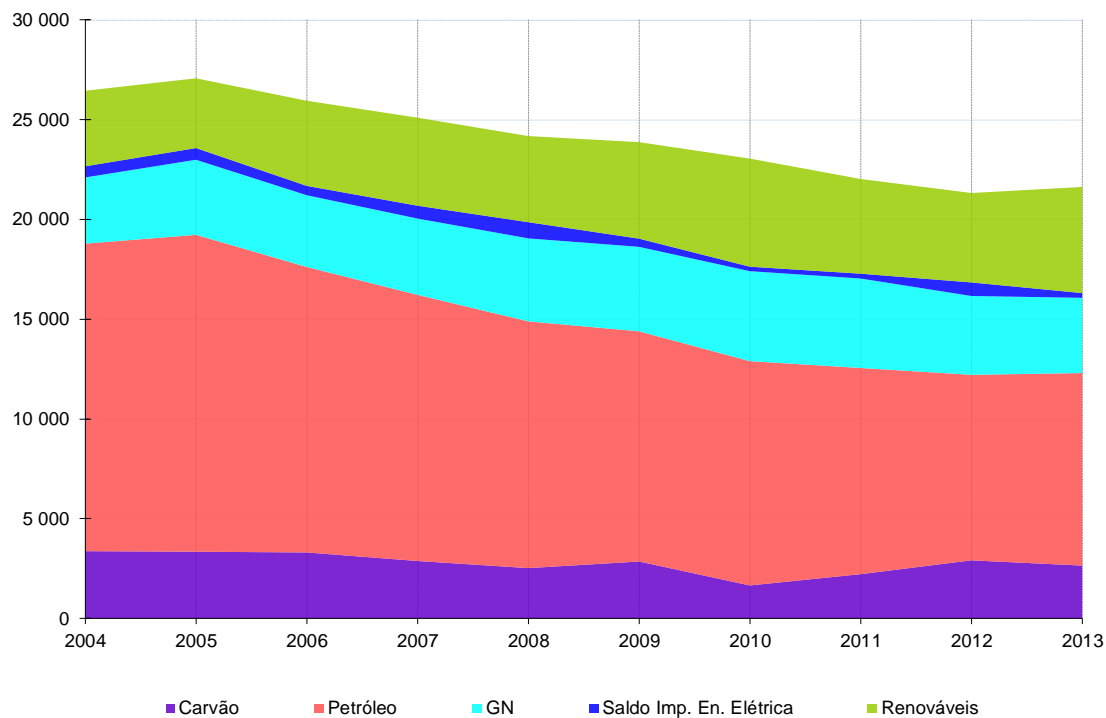
ENERGIA EM PORTUGAL

Principais Números



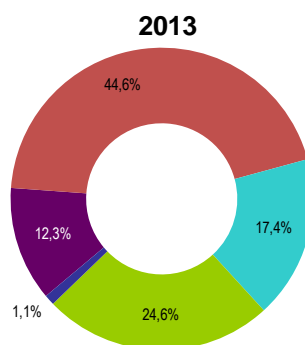
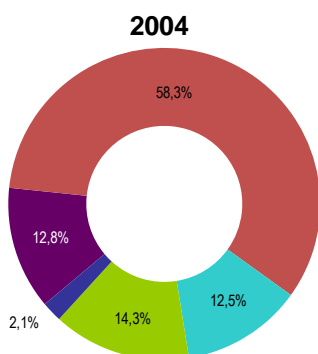
Fevereiro de 2015

CONSUMO DE ENERGIA PRIMÁRIA (ktep)

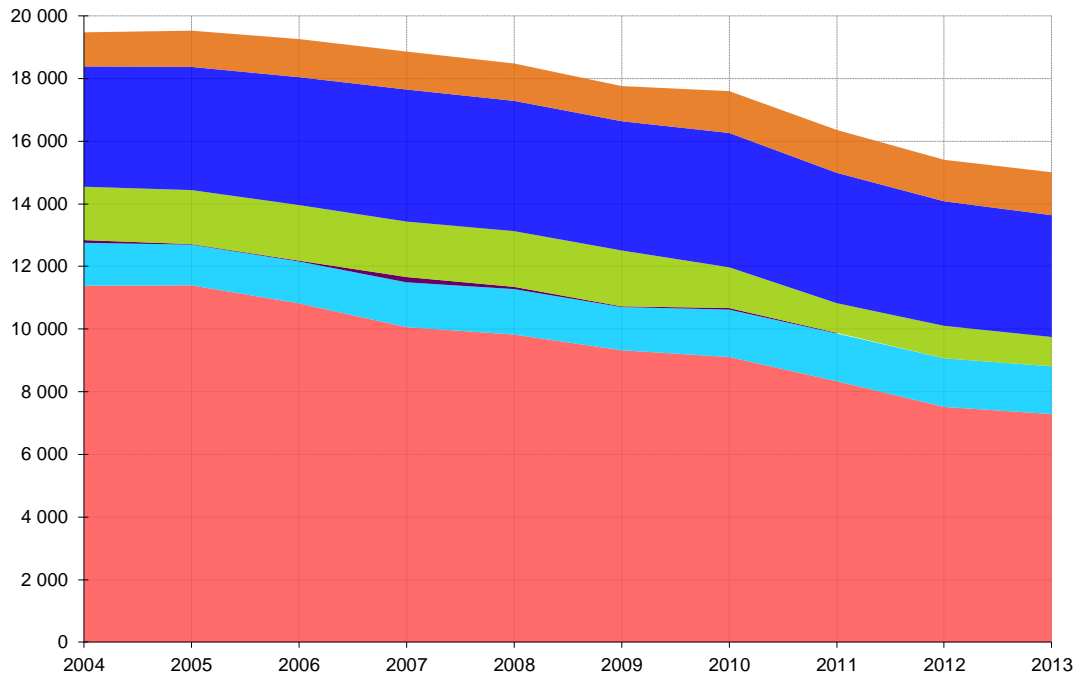


	2004	2005	2006	2007	2008	2009	2010	2011	2012	2013
Carvão	3 375	3 349	3 310	2 883	2 526	2 858	1 657	2 222	2 915	2 653
Petróleo	15 411	15 877	14 305	13 337	12 365	11 533	11 241	10 332	9 297	9 648
GN	3 316	3 761	3 595	3 821	4 157	4 233	4 507	4 483	3 950	3 769
Saldo Imp. En. Elétrica	557	587	468	644	811	411	226	242	679	239
Renováveis	3 785	3 496	4 267	4 410	4 324	4 836	5 428	4 746	4 480	5 317
RI	0	18	26	25	40	40	54	85	160	80
Total	26 445	27 087	25 971	25 120	24 222	23 912	23 113	22 110	21 482	21 705

RI – Resíduos Industriais



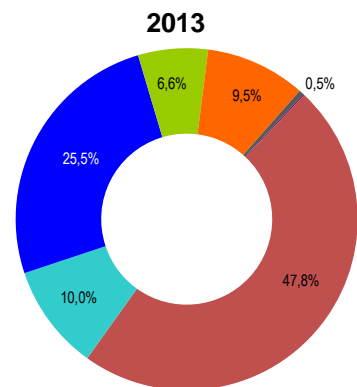
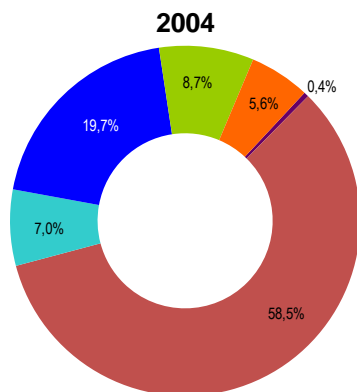
CONSUMO DE ENERGIA FINAL (ktep)



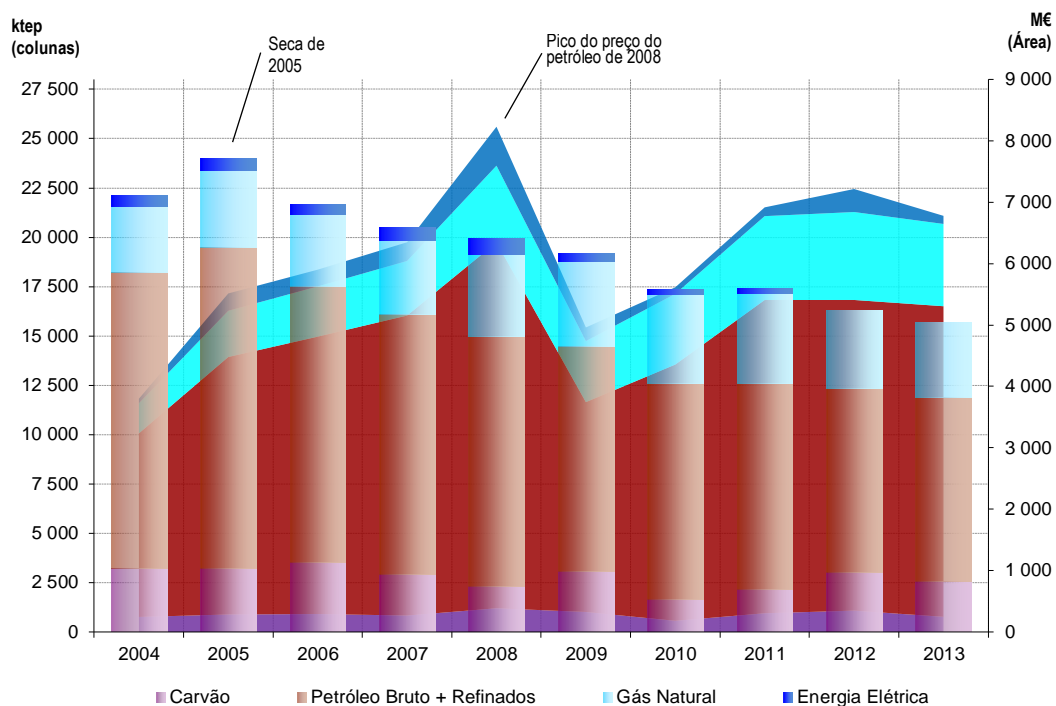
■ Petróleo
 ■ GN
 ■ Carvão
 ■ Biomassa
 ■ E. Elétrica
 ■ Calor

	2004	2005	2006	2007	2008	2009	2010	2011	2012	2013
■	11384	11395	10821	10061	9824	9324	9106	8334	7513	7286
■	1369	1300	1337	1431	1451	1378	1514	1525	1551	1524
■	88	16	26	168	71	22	50	20	19	19
■	1703	1726	1775	1771	1780	1785	1301	947	1037	937
■	3842	3932	4083	4216	4159	4126	4289	4162	3977	3889
■	1088	1158	1217	1212	1194	1123	1336	1370	1326	1370
O	0	40	57	54	65	74	102	135	216	143
	19 473	19 567	19 316	18 913	18 544	17 832	17 699	16 494	15 640	15 167

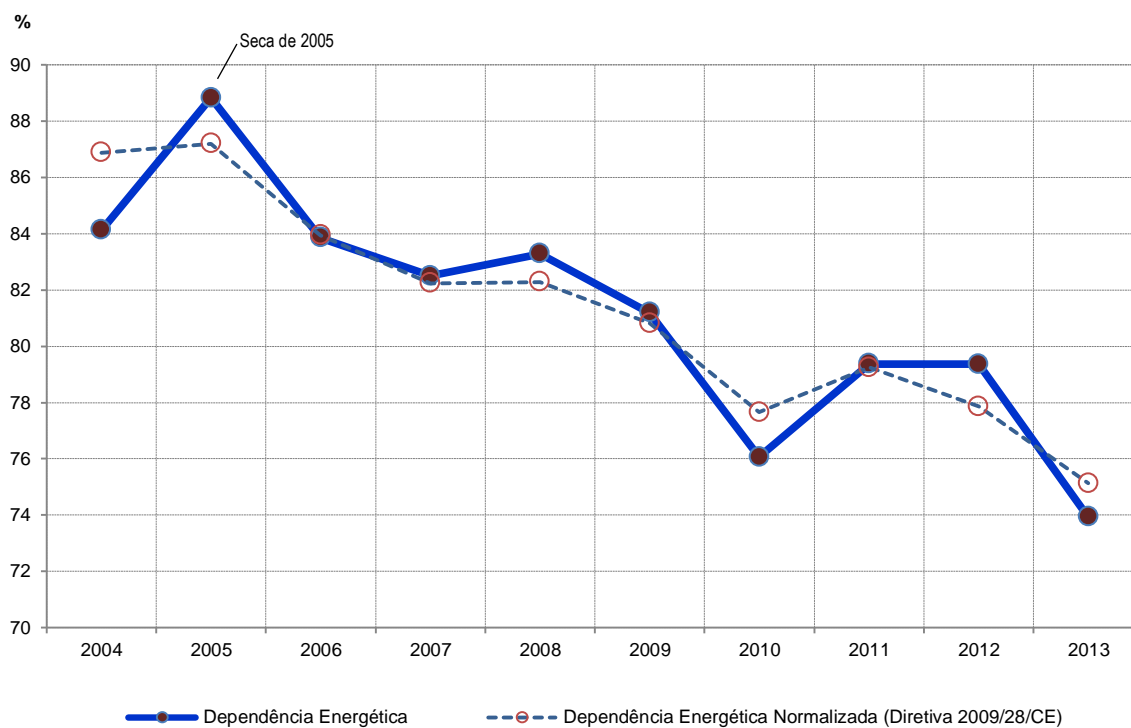
O – Outras formas de energia



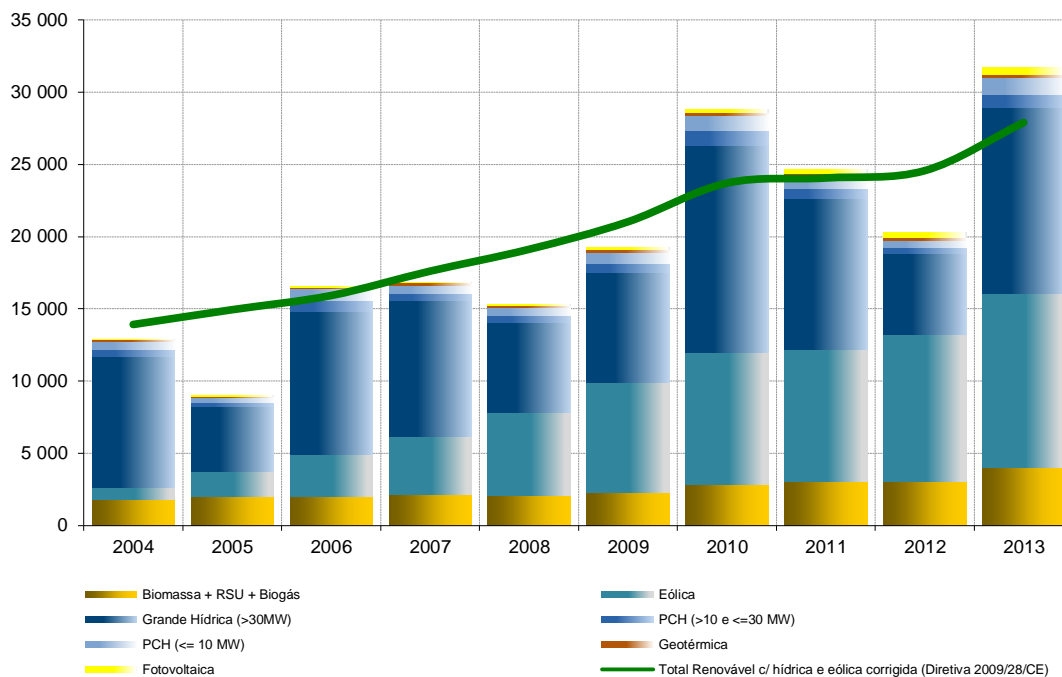
SALDO IMPORTADOR DE PRODUTOS ENERGÉTICOS



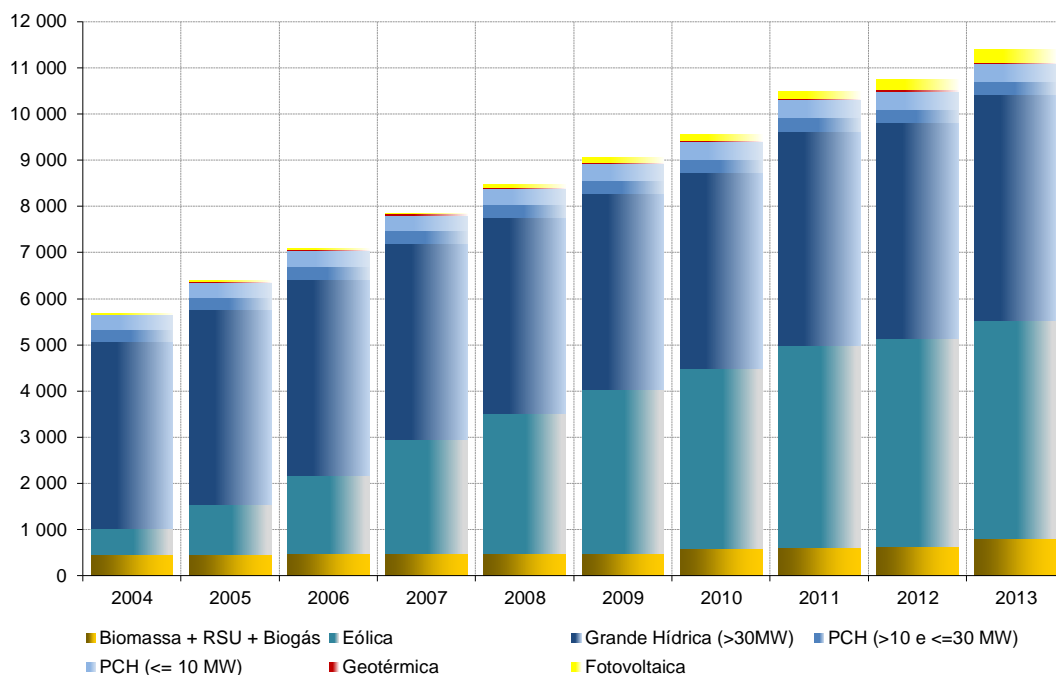
DEPENDÊNCIA ENERGÉTICA (%)



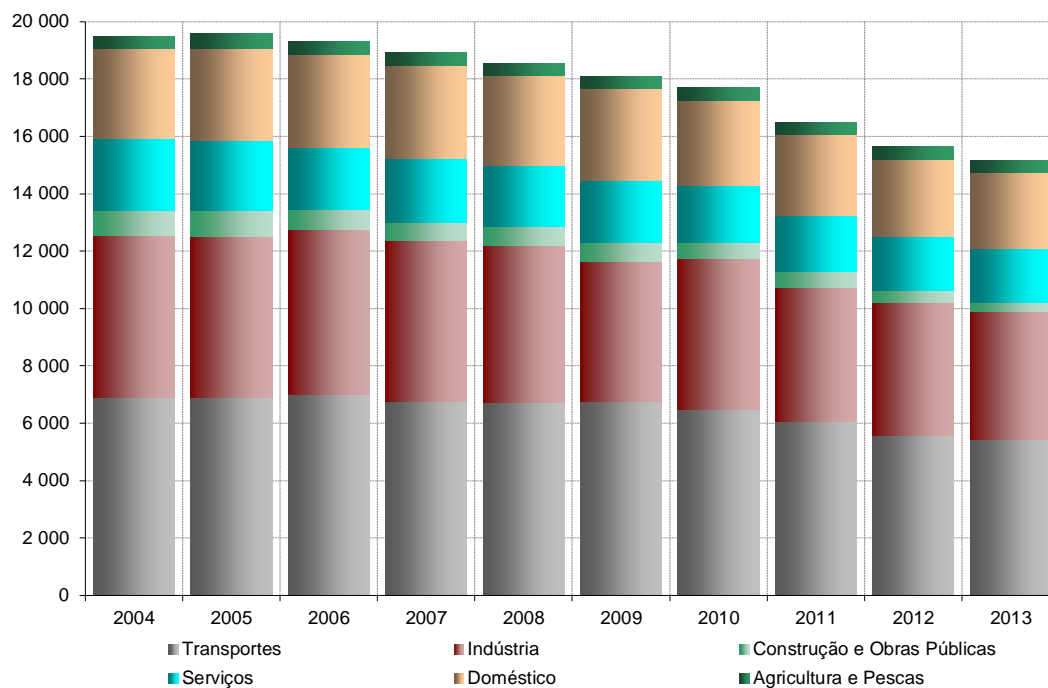
PRODUÇÃO DE ELETRICIDADE POR ENERGIAS RENOVÁVEIS (GWh)



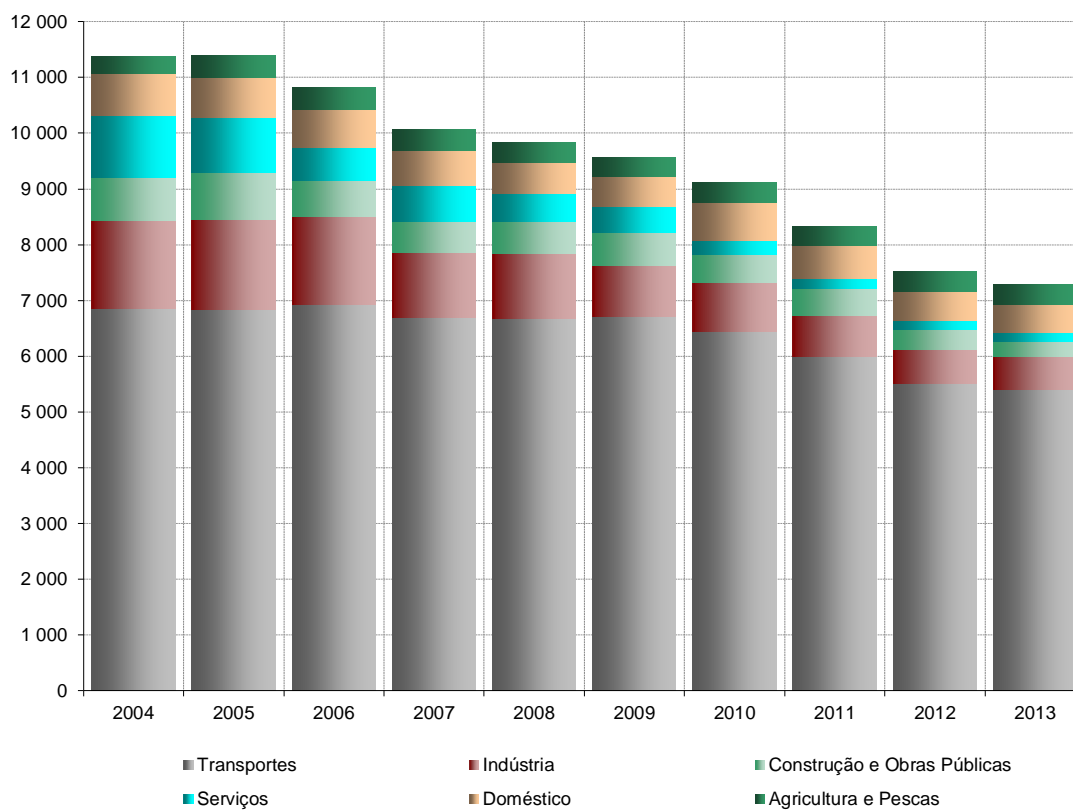
CAPACIDADE INSTALADA DE ENERGIAS RENOVÁVEIS (MW)



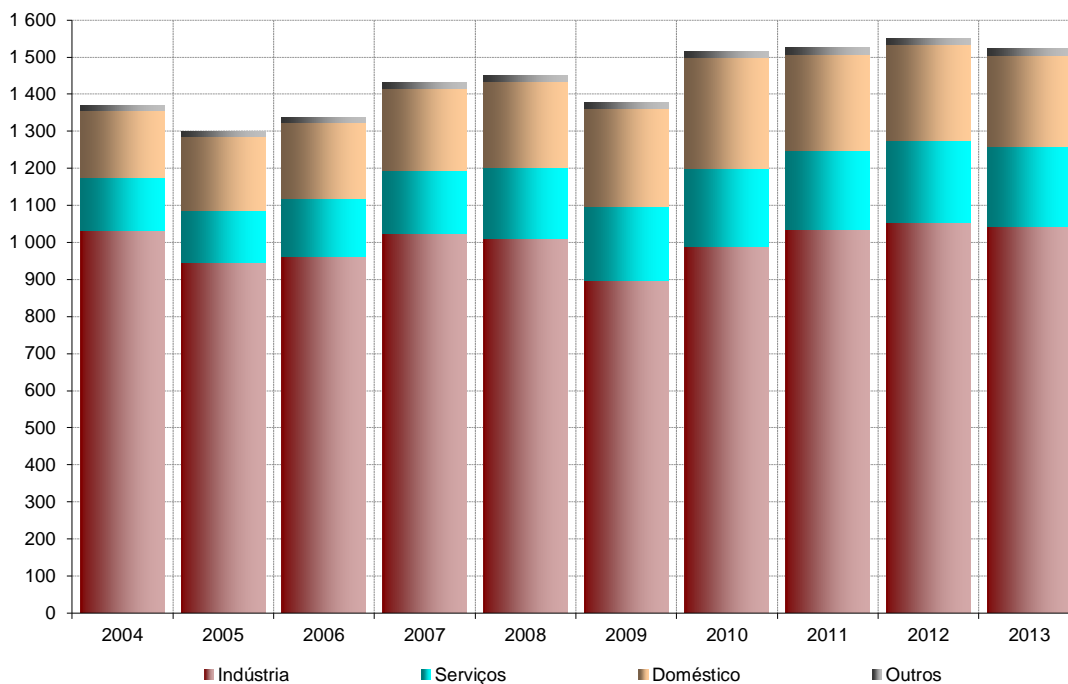
CONSUMO TOTAL DE ENERGIA FINAL POR SECTOR DE ATIVIDADE (ktep)



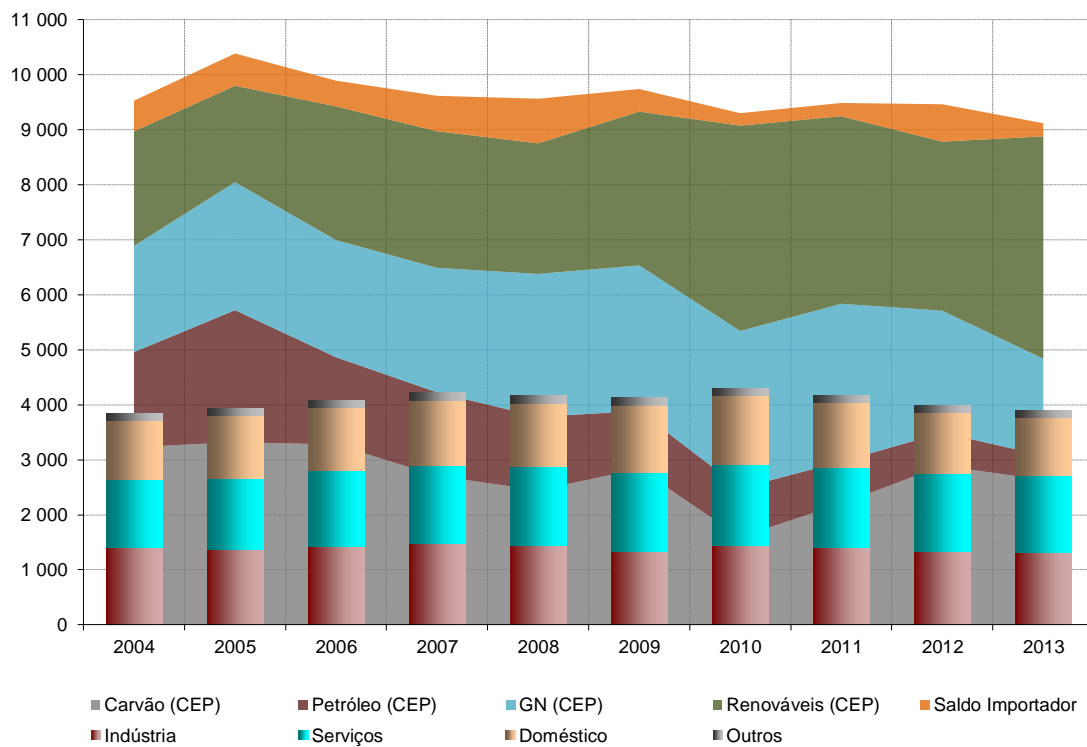
CONSUMO FINAL DE DERIVADOS DO PETRÓLEO P/ SECTOR DE ATIVIDADE (ktep)



CONSUMO FINAL DE GÁS NATURAL POR SECTOR DE ATIVIDADE (ktep)

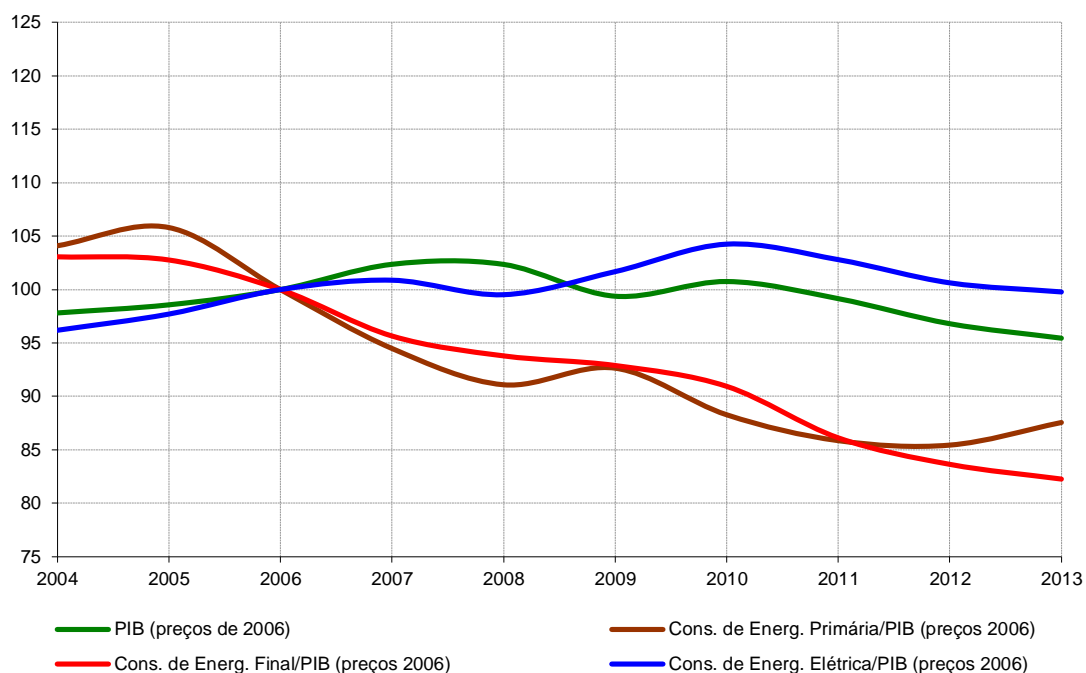


ENERGIA ELÉTRICA (ktep)

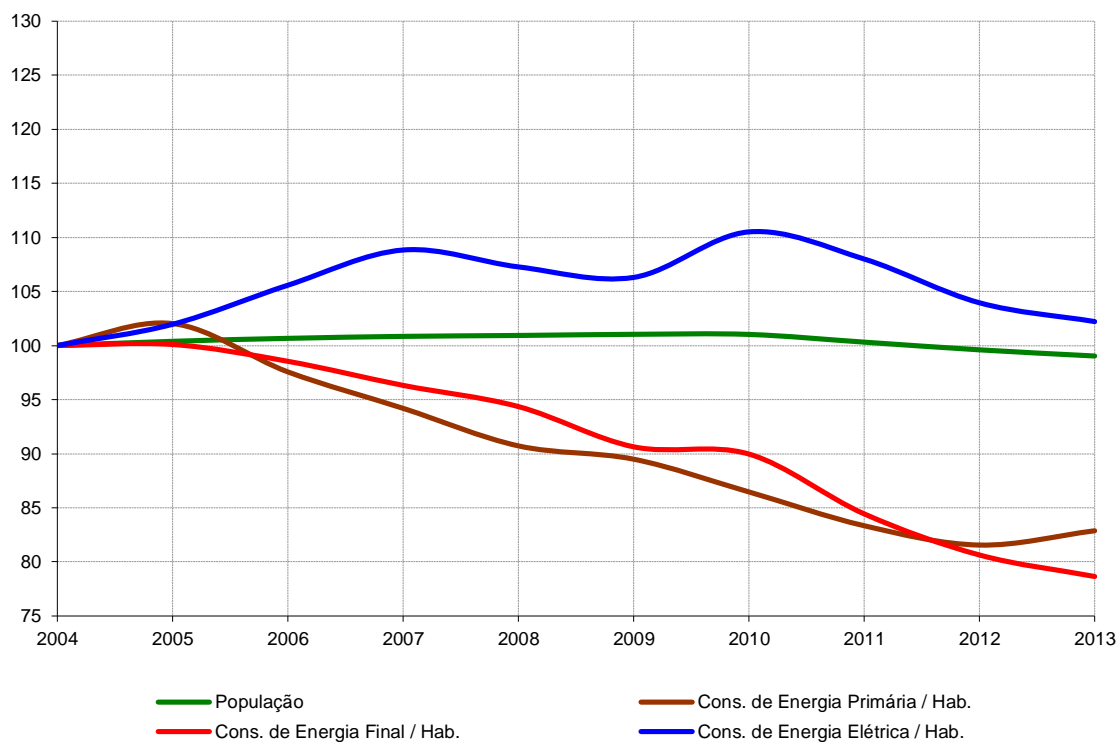


CEP - Consumo de Energia Primária (representada em área) na produção de energia elétrica (inclui a produção de calor em cogeração)

CONSUMO ENERGÉTICO / PIB (2006=100)



CONSUMO ENERGÉTICO POR HABITANTE (2004=100)



Nota: Os valores de consumo final para 2013 são provisórios.