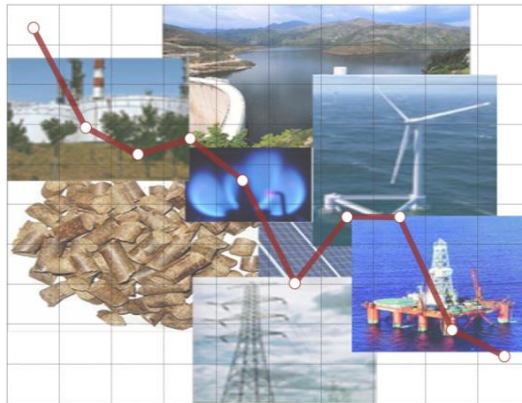


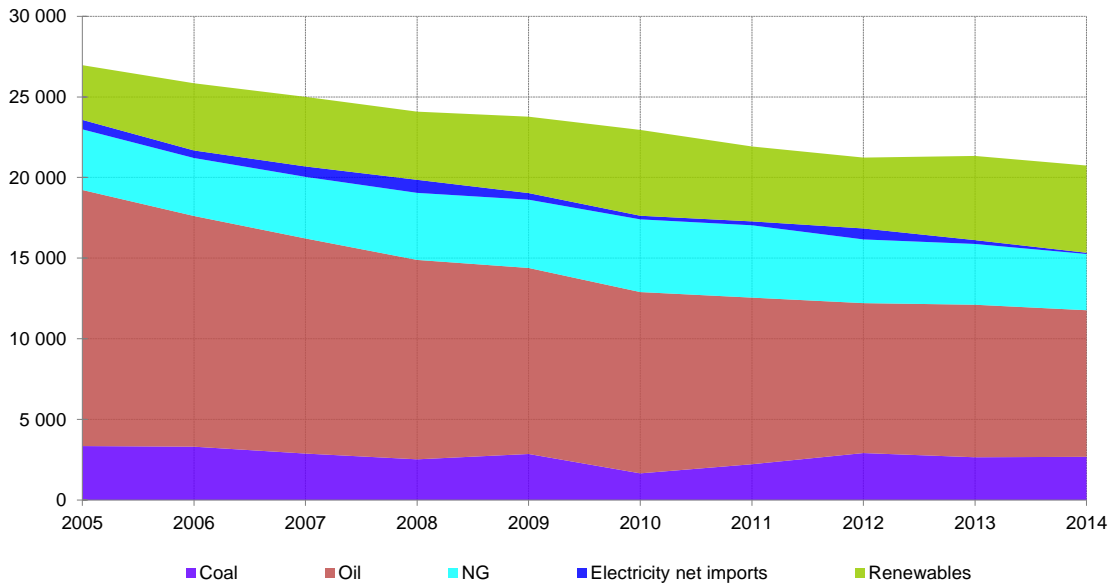
PORTUGAL

KEY ENERGY STATISTICS

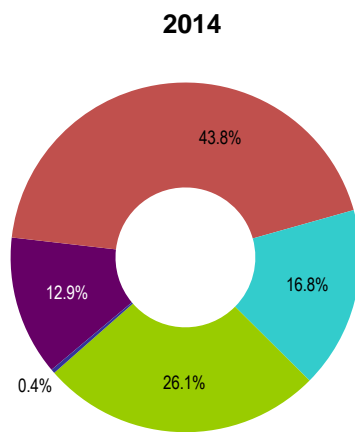
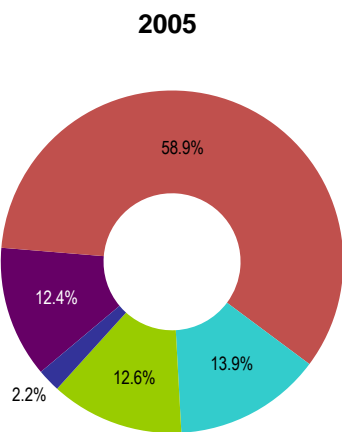


February 2016

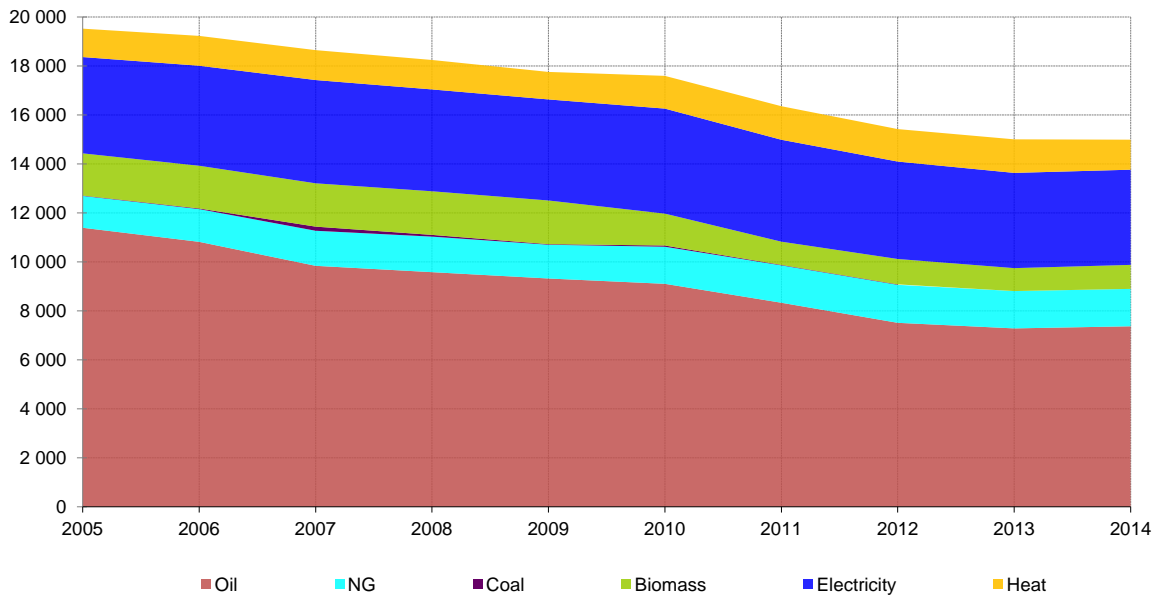
TOTAL PRIMARY ENERGY CONSUMPTION (ktoe)



	2005	2006	2007	2008	2009	2010	2011	2012	2013	2014
Coal	3349	3310	2883	2526	2858	1657	2222	2915	2653	2682
Oil	15877	14305	13337	12365	11533	11241	10332	9297	9458	9089
NG	3761	3595	3821	4157	4233	4507	4483	3950	3769	3486
Electricity net imports	587	468	644	811	411	226	242	679	239	78
Renewables	3392	4166	4316	4225	4737	5321	4647	4395	5220	5408
O – Non renewable waste	121	127	119	131	139	150	183	246	177	178
Total	27 087	25 971	25 120	24 215	23 911	23 101	22 110	21 482	21 515	20 920

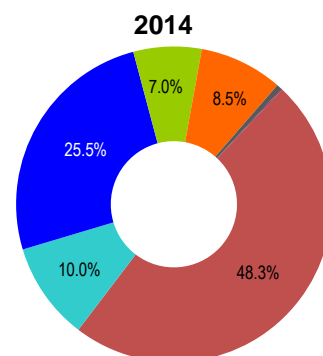
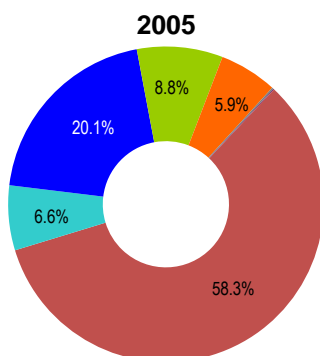


TOTAL FINAL CONSUMPTION (ktoe)

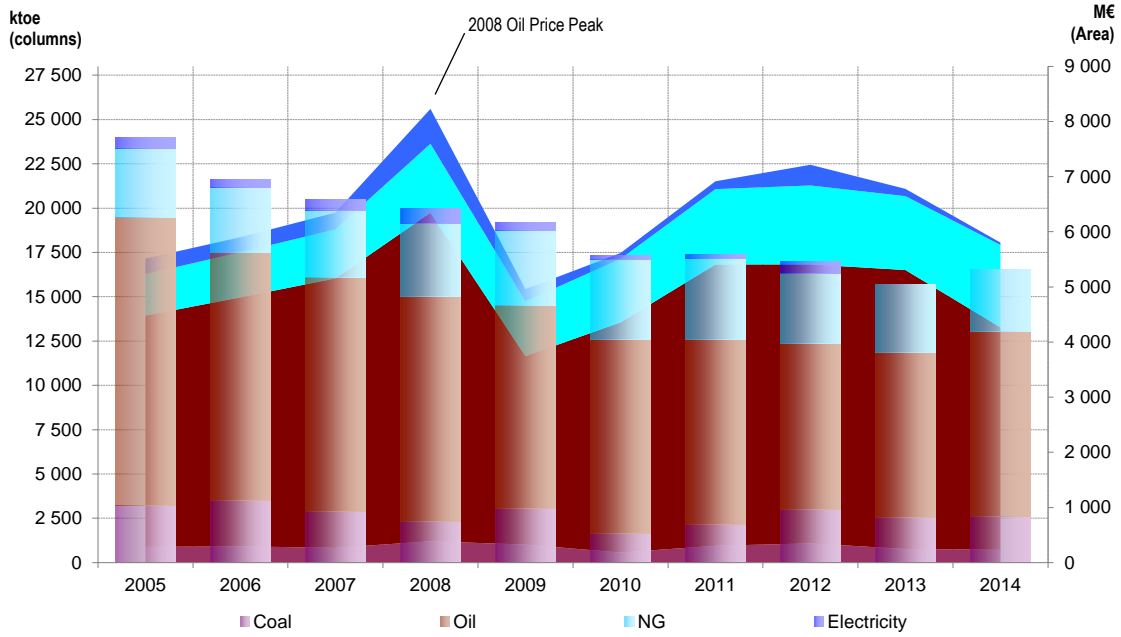


	2005	2006	2007	2008	2009	2010	2011	2012	2013	2014
Oil	11395	10821	9841	9582	9324	9106	8334	7513	7286	7372
NG	1300	1337	1431	1451	1378	1514	1525	1551	1524	1527
Coal	16	26	168	71	22	50	20	19	19	12
Biomass	1722	1744	1770	1781	1785	1301	947	1037	937	980
Electricity	3932	4083	4216	4159	4126	4289	4162	3977	3889	3886
Heat	1160	1219	1221	1202	1123	1336	1370	1326	1370	1226
O	54	63	60	65	74	102	135	216	143	163
Total	19 579	19 292	18 708	18 311	17 832	17 699	16 494	15 640	15 167	15 167

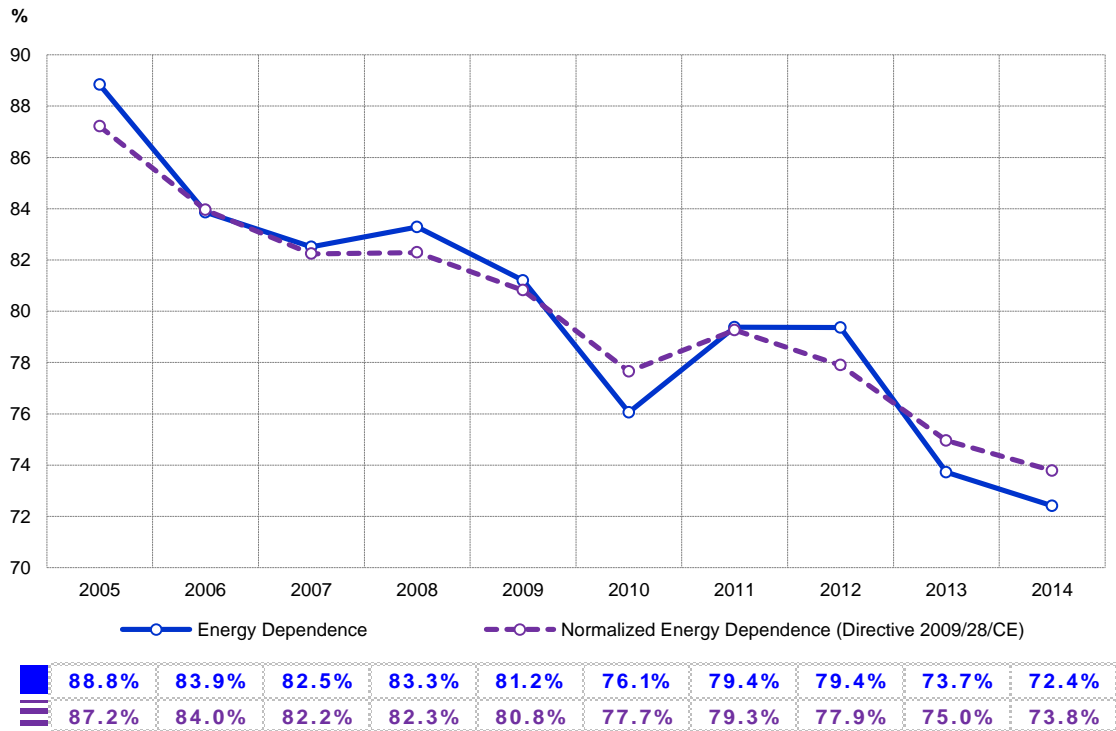
O - Other Energy Sources



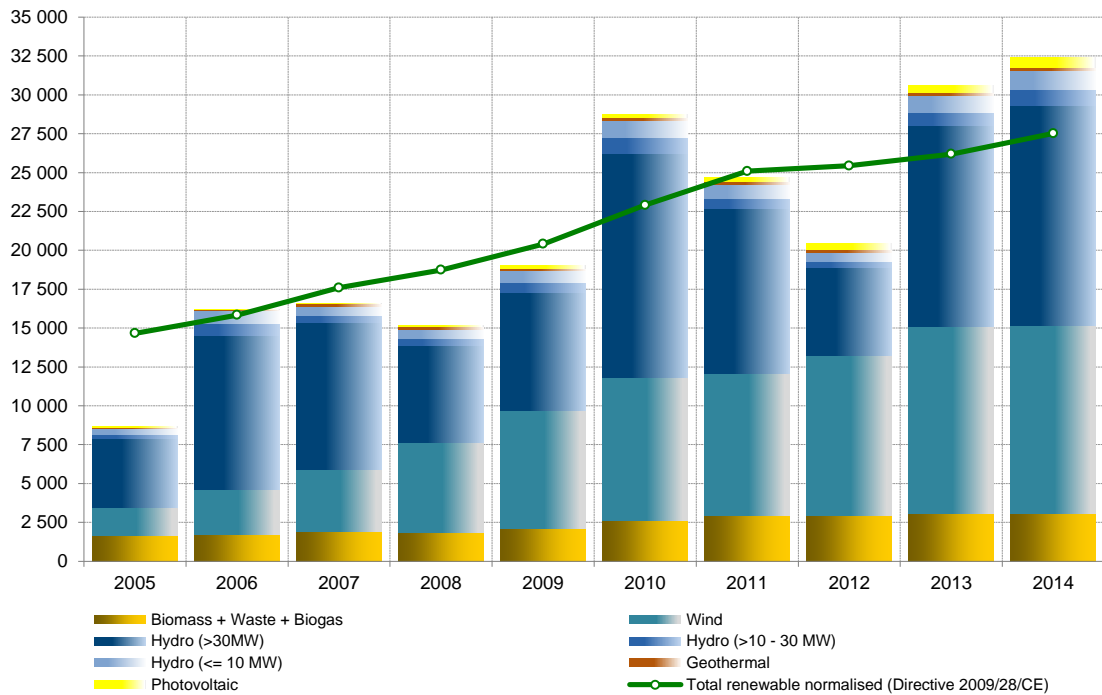
NET IMPORTS



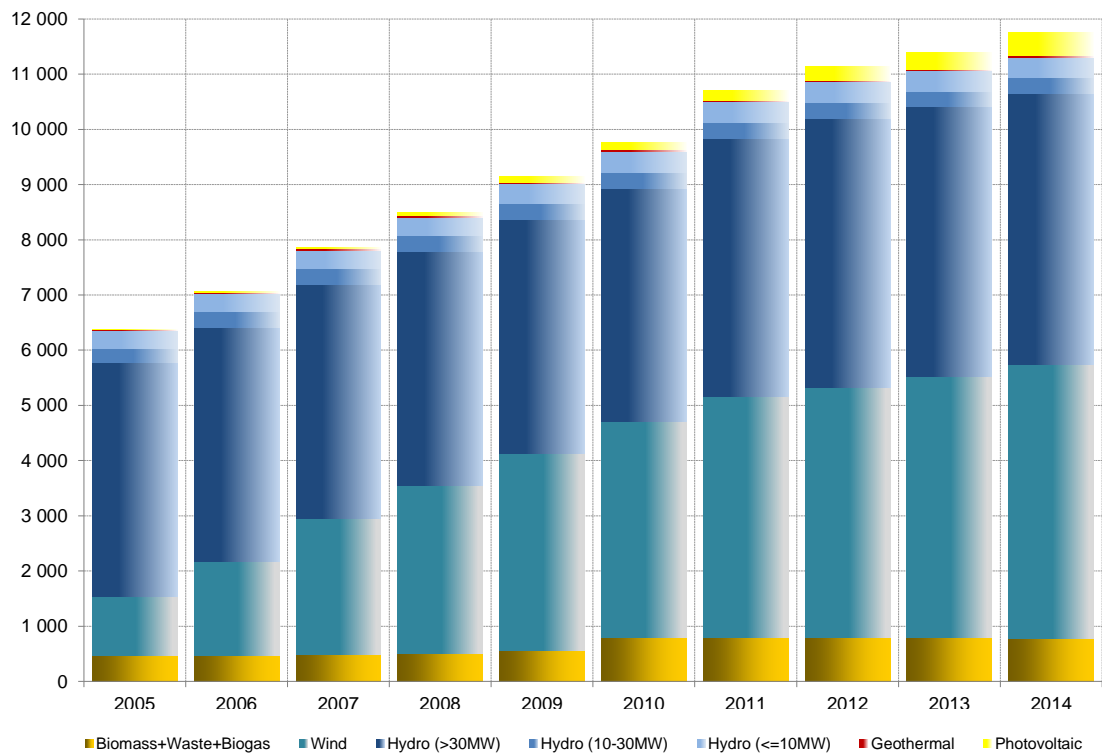
ENERGY DEPENDENCE



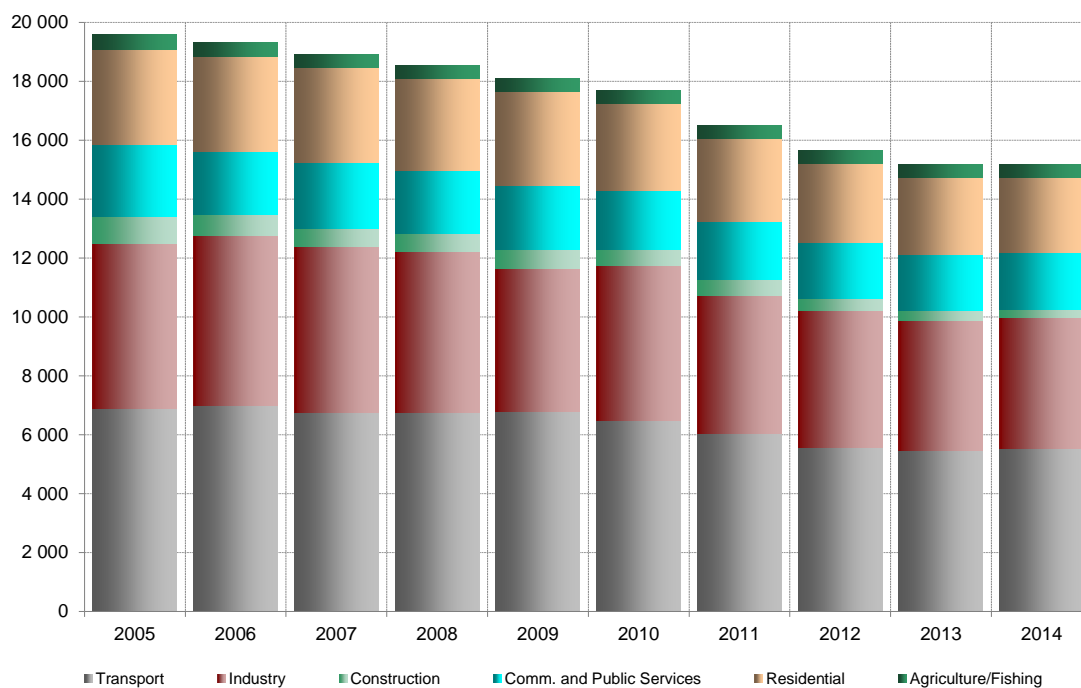
RENEWABLE ELETRICITY PRODUCTION (GWh)



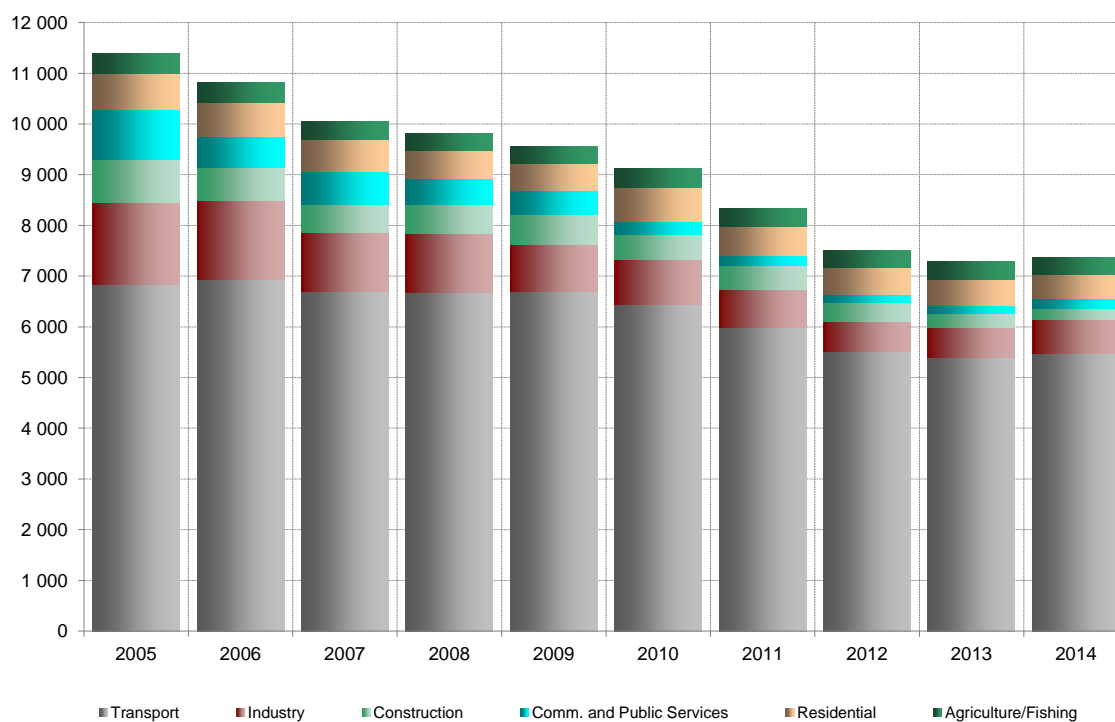
RENEWABLE INSTALLED CAPACITY (MW)



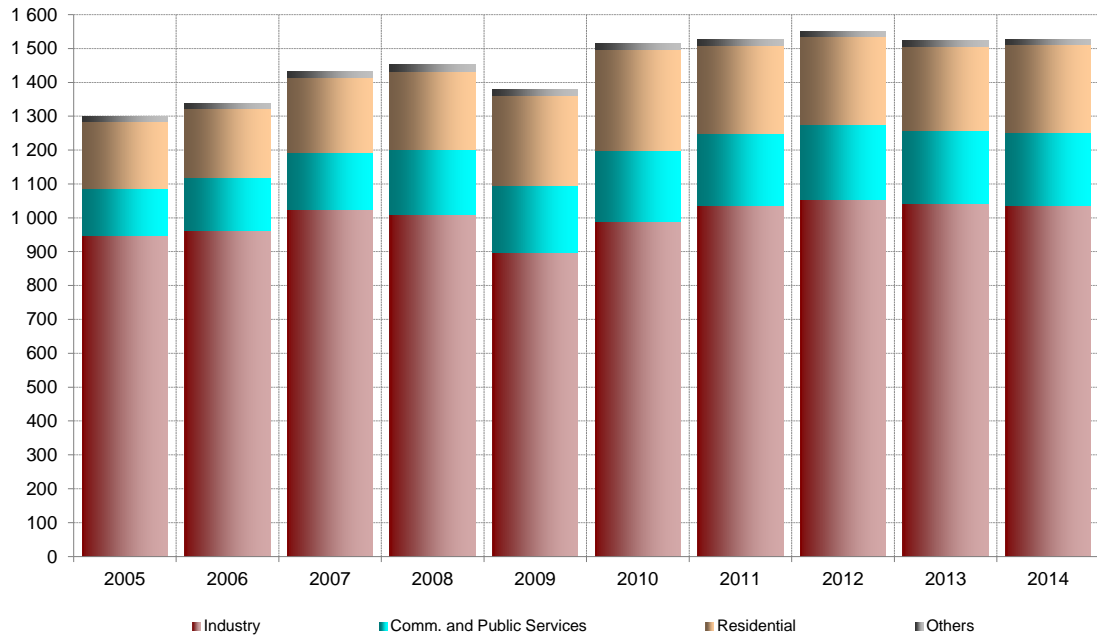
TOTAL FINAL CONSUMPTION BY ACTIVITY SECTOR (ktoe)



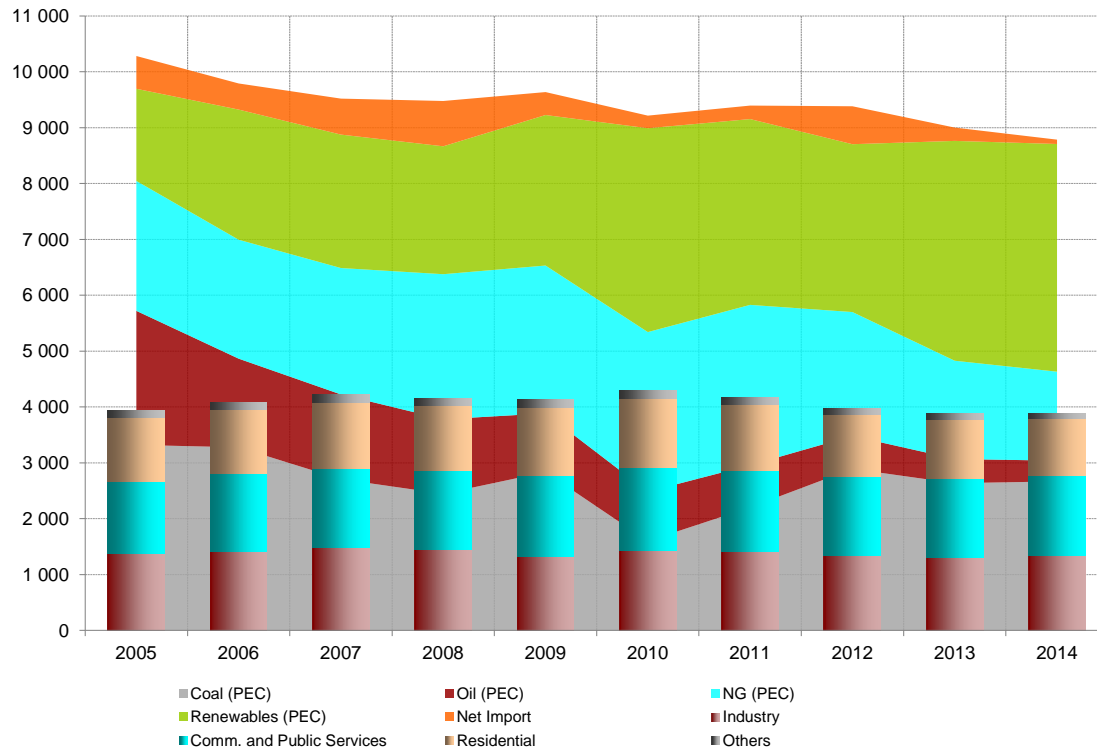
OIL FINAL CONSUMPTION BY ACTIVITY SECTOR (ktoe)



NATURAL GAS FINAL CONSUMPTION BY ACTIVITY SECTOR (ktoe)

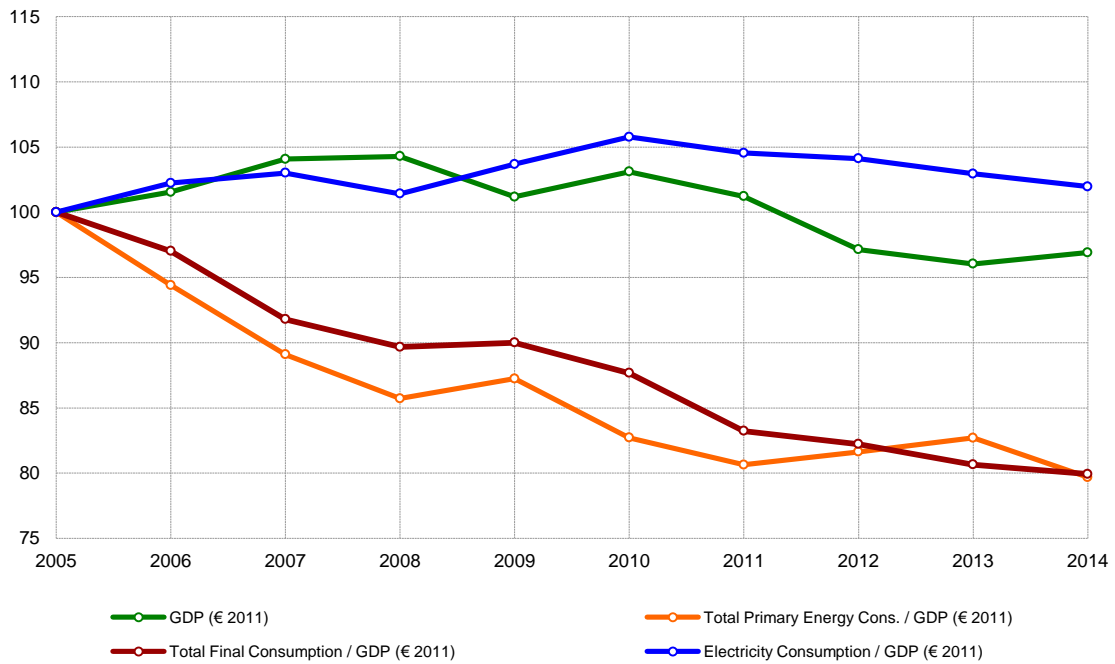


ELECTRICITY (ktoe)



PEC - Primary Energy Consumption (area chart) in electricity production (CHP included).
Electricity consumption by sector in columns chart.

ENERGY CONSUMPTION / GDP (2005=100)



ENERGY CONSUMPTION PER CAPITA (2005=100)

